



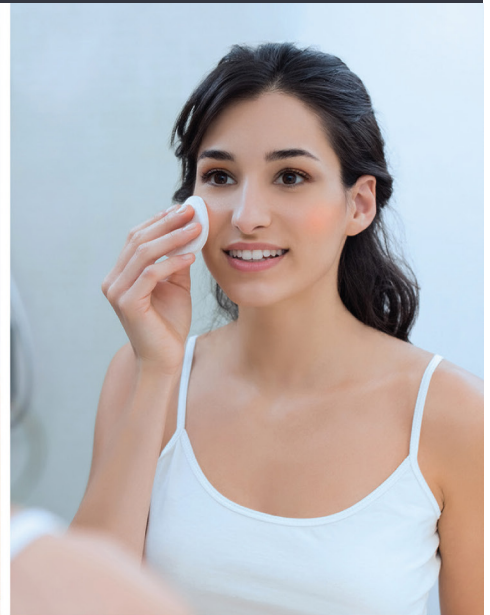
3,000K

Perfect for a sunset cruise, an intimate evening dinner, or a night at the theater.



4,500K

Excellent for an important boardroom meeting, a busy day on campus, or a quick get-together with friends for lunch.



6,000K

Ideal for a leisurely day at the pool, 18 holes at the local country club, or a relaxing cruise.

TECHNOLOGY

PRODUCT DESCRIPTION

With the touch-tunable white and dimming technology, you can change the light color to closely match the environment you're about to encounter, making precise makeup application possible. Outdoors, indoors or an evening out, The simple touch-control interface makes it easy to change the color and brightness of the light to match a variety of settings, helping you bring out that beautiful, confident you.

SPECIFICATION STATEMENT

Solution shall consist of an on-glass capacitive touch button that operates the dual programming features of pre-set lighting (CCT) colors and infinity dimming. Dimming button shall have an auto-dimming night mode for eye sensitivity.

FEATURES AND BENEFITS

- Pre-installed in mirror: for quick and easy setup
- Wire-free: requires no additional electrical work or outlets beyond what is required for the lighted mirror
- Soft-start technology: provides a graceful ramp-up rather than a blinding, instant-on experience
- Tunable white lighting color modes: 3,000K / 4,500K 6,000K
- Adjustable brightness level: from 10% to 100%
- Eye-sensitivity adjustment technology: automatically reduces the light level in night glow mode as eyes adjust to low light
- Wide compatibility: available with most of our LED mirrors, with frame or without frame.

THE ZHUOTAI MIRROR ADVANTAGE

- ✓ 22 years of mirror knowledge and expertise
- ✓ 10,000pcs installations every month
- ✓ Premium quality you can buy with full confidence
- ✓ Lowest total cost of ownership
- ✓ Quick and professional customer service support
- ✓ 25,000-square-meter China manufacturing facility

OPERATION & FUNCTIONALITY

An elegant single-button interface controls the color mode and the brightness level of the mirror lighting.

Tap the button to seamlessly cycle through the available lighting color modes: 3,000K /4,500K /6,000K

Touch-and-hold the button to control the brightness level between 10% and 100% brightness.

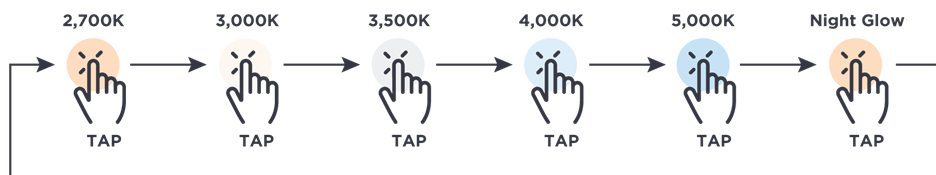


Switch On
Starts at 3,000K @ 100% Brightness.

COLOR MODE



Tap to Change Color Mode
Last mode in sequence is Night Glow



BRIGHTNESS LEVEL



Touch & Hold to Dim/Brighten
Release at desired brightness level or to switch functions from dim to brighten or vice versa.

